



# GAT MONTHLY MEMBERSHIP PROGRESS REPORT

Results as of: 8/31/2024

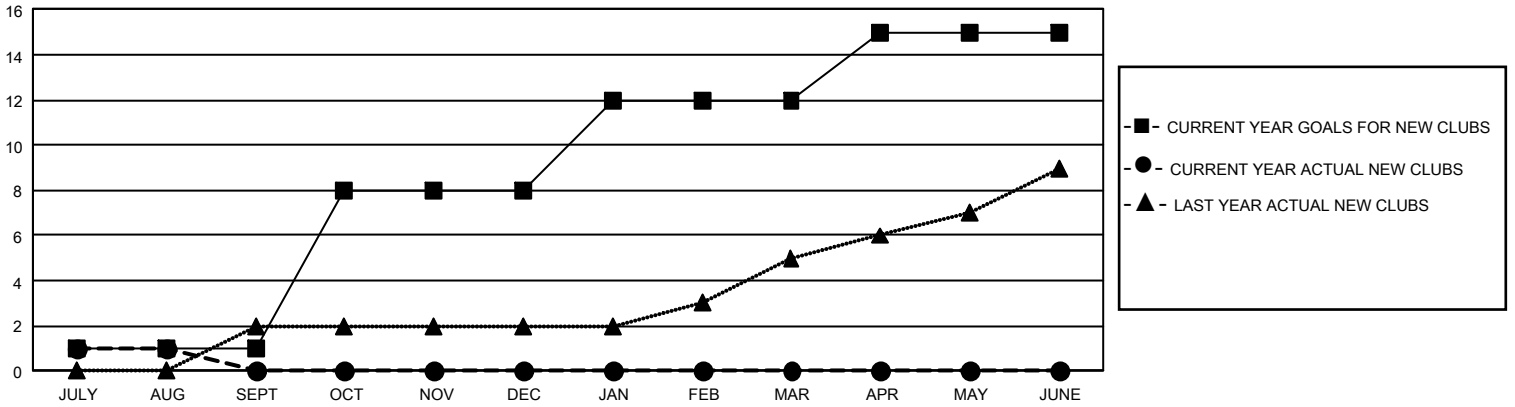
## GMT Constitutional Area 5 - J, Group I

REPORT DOES NOT INCLUDE CLUBS IN UNDISTRICTED AREAS.

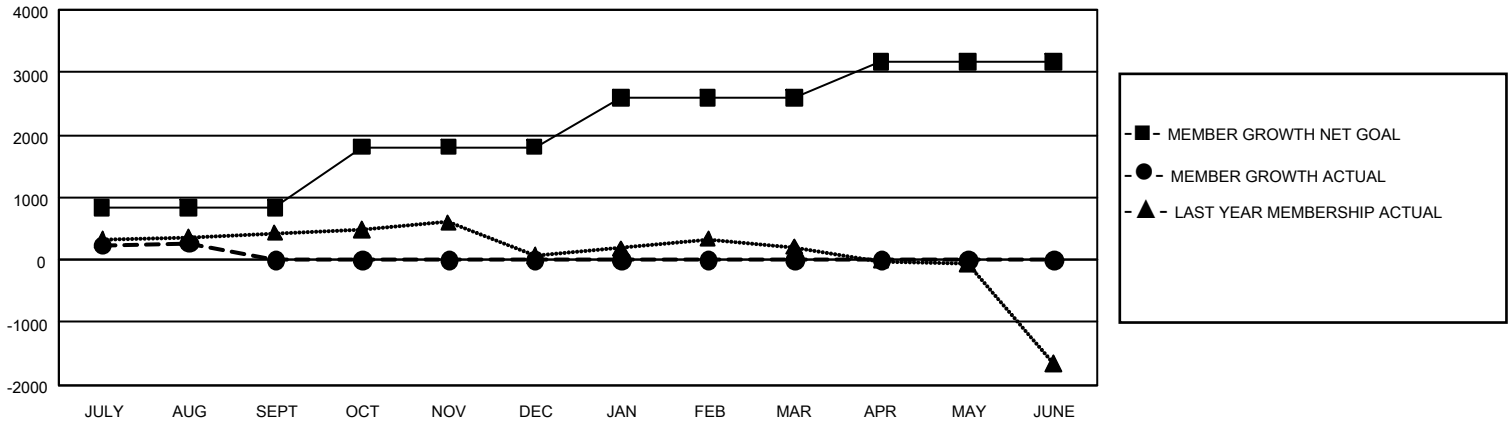
Clubs			
RESULTS FOR 2024-2025			
QUARTER	NEW CLUB GOAL	NEW CLUBS	DROPPED CLUBS
JULY/AUG/SEPT	3	1	1
OCT/NOV/DEC	21	0	0
JAN/FEB/MAR	12	0	0
APR/MAY/JUNE	9	0	0

Members			
RESULTS FOR 2024-2025			
QUARTER	MEMBER GROWTH NET GOAL	MEMBER GROWTH ACTUAL	DROPPED MEMBERS ACTUAL (including transfers)
JULY/AUG/SEPT	830	864	496
OCT/NOV/DEC	981	0	0
JAN/FEB/MAR	785	0	0
APR/MAY/JUNE	571	0	0

GOALS AND ACTUAL NEW CLUBS CUMULATIVE



GOALS AND ACTUAL MEMBERS CUMULATIVE



<b>DROPPED CLUBS: 1</b>	<b>388 CLUBS OF 1,090 ADDED 1 OR MORE NEW MEMBERS</b>	<b><u>GENDER DISTRIBUTION</u></b>	
		MALE 30,096 (78.69%)	FEMALE 8,145 (21.30%)
<b><u>DROPPED MEMBERS</u></b>		NON BINARY 0 (0.00%)	PREFER NOT TO ANSWER 7 (0.02%)
DECEASED 41	<a href="#">CLICK HERE FOR CUMULATIVE MEMBERSHIP DATA</a>	TOTAL FAMILY UNIT MEMBERS 9,116	
CLUB CANCELLED 0		FAMILY MEMBERS PAYING HALF DUES 5,059	
OTHER 422			
<b>TOTAL 463</b>			